

ENABLING **THE PRISON OF** **THE FUTURE**

A Forward Look at Key Technologies which can
Unlock Benefits for Justice & Corrections Facilities

TABLE OF CONTENTS

2	Table of Contents
3	Enabling the Prison of the Future
4	The Convergence of Two Turnkey Technologies
5	A Snapshot of Prisons in Australia and New Zealand Today
6	A Foundation of Safety and Security
7	Future Solutions for Staff & Facility Operators
10	Future Solutions for Prisoners
11	Future Solutions for Facility Visitors, Police Personnel and Social Workers
13	Rehabilitating Aging Infrastructure
14	Enabling the Adoption of Change and Innovation
15	How Honeywell can Help

ENABLING THE PRISON OF THE FUTURE

The world is ever changing, and how we do things tomorrow will be very different from how they were done yesterday. Correction facilities are no exception. Once upon a time, a correction facility was seen as little more than a place to hold people while they served their sentence. Today, we expect them to be much more.

WHAT DOES THE PRISON OF THE FUTURE LOOK LIKE?

As our expectations of what prisons are for and how they work changes over time, new demands are being placed on the technology and systems which enable new outcomes.

We see the prison of the future as a space enabled by smarter, integrated technologies that enhance safety and security for staff, visitors and guests. The prison of the future will also enable rehabilitation of prisoners through normalising the environment, enabling more access to technology, and a safer space to collaborate with correctional officers to evolve behavioural outcomes and reduce recidivism.

This philosophical shift will require a remodeling of the physical and conceptual prison environment, moving from a surveillance environment to one which is rehabilitation focused and technologically ready.

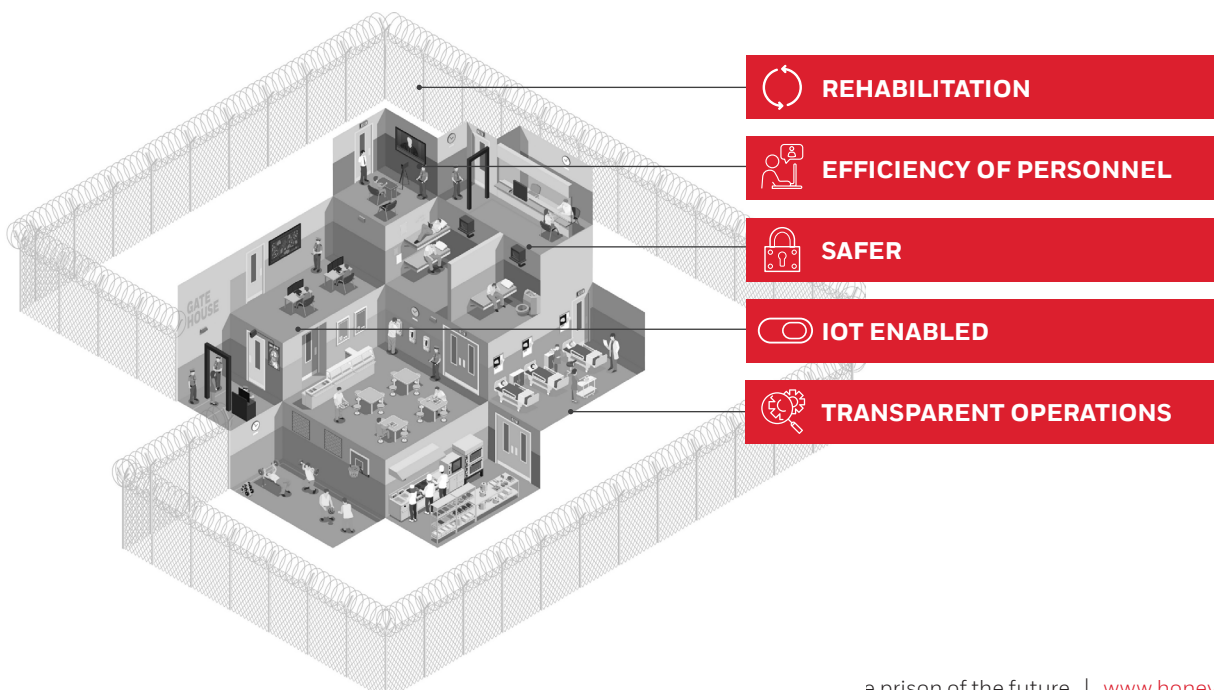
Prisons are increasingly expected to be places of rehabilitation which seek to enable meaningful change in the lives of prisoners and to provide opportunities and resources for self-reflection and improvement, with the ultimate goal of encouraging behavioural changes and reducing recidivism.

ENHANCING EFFECTIVENESS OF PERSONNEL

The approach presented in this document is intended to enhance the effectiveness of existing prison staff and personnel by, where practical, relieving them of performing routine and mundane tasks so they can focus on what really matters – namely, improving the outcomes of the prison for all user groups.

The simple truth is that technology can't run a prison by itself. The role of staff within prisons – from correctional officers to social workers and maintenance teams – is absolutely essential. Rather, technology is best deployed to increase the capability of operations and security staff, reducing the amount of time and effort required for routine tasks and inspections and enabling them, through a safer and more secure environment, to feel more comfortable and interact with prisoners in a meaningful way.

Automation can provide adequate monitoring certainty for non-critical applications, but when it comes to life safety and security issues where the health and safety of prisoners, staff and other facility users is involved, direct human involvement in decision making is, and will continue to be, of critical importance.



THE CONVERGENCE OF TWO TURNKEY TECHNOLOGIES

The vision outlined herein is underpinned by two turnkey technologies which, together, can unlock significant potential to enhance the effectiveness and efficiency of both new and existing prison facilities and provide new educational opportunities for prisoners.¹



AUTONOMOUS MONITORING SUPPORTED BY ARTIFICIAL INTELLIGENCE & MACHINE LEARNING

Assets with embedded intelligence can automatically report their condition, and wider-reaching applications of Artificial Intelligence (AI) and machine learning can assist in providing staff with whole-of-facility awareness and oversight.



SECURE WIRELESS DIGITAL SERVICES

Robust and highly restricted wireless networking enables real-time communication for a wide range of devices from tablets and mobile devices through to drones and autonomous security vehicles for operators, as well as secure digital access to education and training materials for prisoners.

STAKEHOLDER GROUPS

Embedding these turnkey technologies will enhance the prison experience for interdependent stakeholder groups.



¹ Kerr, A. & Willis, M. (2018) Prisoner use of information and communications technology, Trends & issues in Crime and Criminal Justice, No. 560, October 2018

A SNAPSHOT OF PRISONS IN AUSTRALIA AND NEW ZEALAND TODAY

Overall, prisons in Australia² and New Zealand³ are:



Operating consistently at or above their as-designed capacity, **suggesting that new prison infrastructure faces challenges to meet demand.**



Housing multiple inmates in cells designed for single occupants in some instances due to **a delay of new facilities coming online.**⁴



Seeing an increase in prisoner numbers over time, **which suggests that the above trend is likely to continue into the foreseeable future.**



Utilising a highly variable ratio of operational staff to prisoners in Australia, **which suggests significant pressures on staff time and attention.**



Operating at a wide range of costs per prisoner per day, **suggesting that additional efficiencies are waiting to be unlocked in many states.**



Providing education and training programs to significant numbers of prisoners in many states, although **the majority of eligible prisoners are not yet participating.**

	QLD	NSW	VIC	WA	SA	TAS	NT	ACT	AUS	NZ ⁴
Number of Facilities	14	53	14	39	9	5	4	2	118	18
Number of People in Prisons	8,923	13,495	8,044	6,908	2,900	653	1,708	484	43,115	8,655
Secure Facility Utilised As Designed Capacity	106%	109%*	-#	133%	-#	97%	114%	112%	112%	99%
Cost Per Prisoner Per Day	\$285.67	\$263.09	\$412.83	\$301.42	\$305.65	\$368.57	\$321.59	\$415.00	\$341.53	\$210
Hours Out-of-Cell Per Day	9.5	8.2	11.0	11.4	8.6	7.9	12.2	9.4	9.8	-#
Offender-to-Ops-Staff Ratio	31:1	24:1	10:1	17:1	17:1	19:1	14:1	14:1	18:1	11:1
Offender-to-Other-Staff Ratio	111:1	120:1	66:1	67:1	64:1	131:1	56:1	56:1	84:1	-#
Eligible Prisoner Education and Training Participation	38.2%	22.9%	39.5%	29.7%	68.6%	24.8%	32.7%	70.8%	35.1%	~45%

#No data

*Most recent data 2009-10

² Report on Government Services Productivity Commission 2020, <https://www.pc.gov.au/research/ongoing/report-on-government-services/2020/justice/corrective-services>, Australian Government, Accessed 26/05/2021

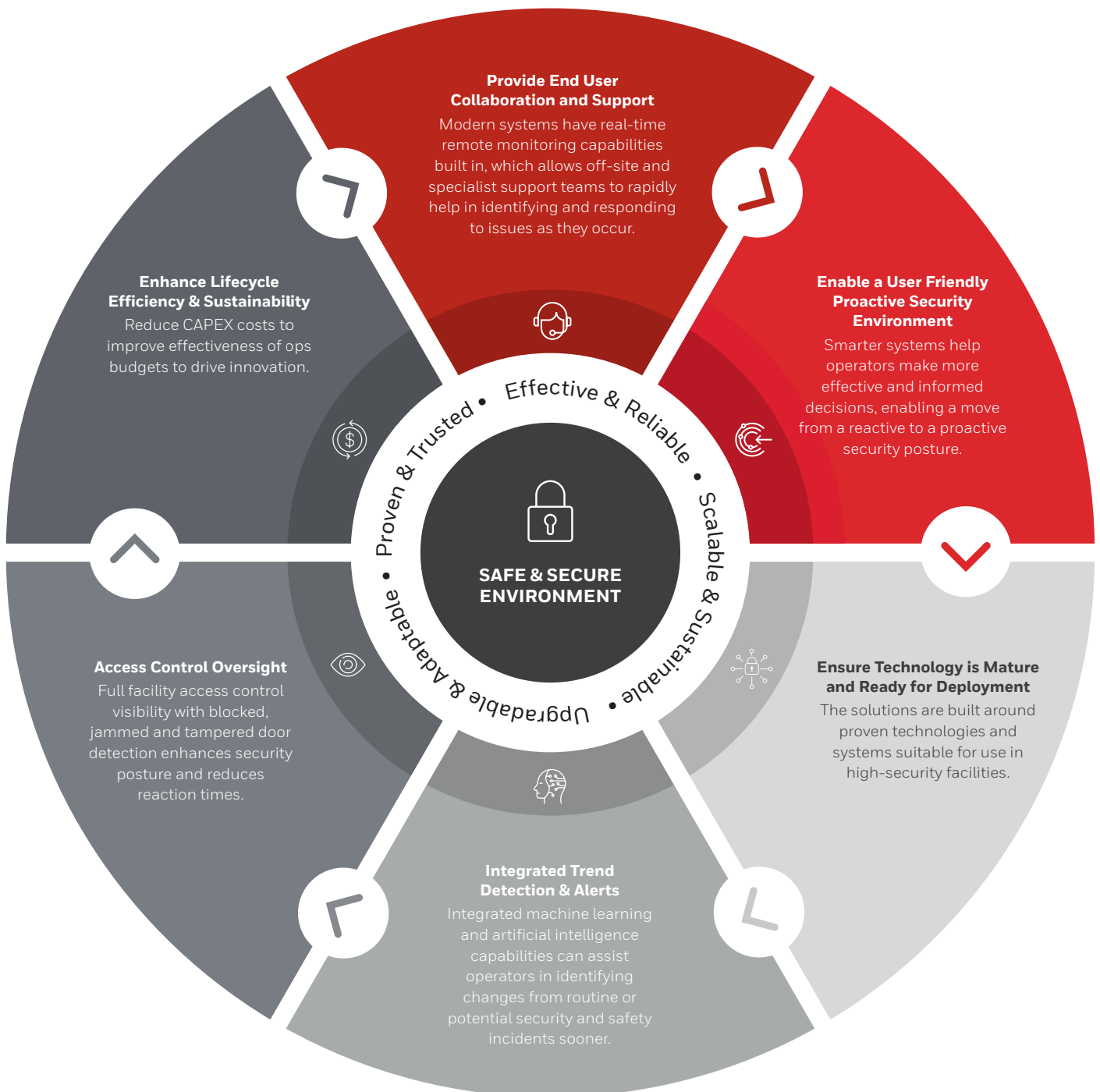
³ Annual Report 2020 https://www.corrections.govt.nz/_data/assets/pdf_file/0018/42273/Annual_Report_2019_2020.pdf, Department of Corrections NZ, Accessed 02/06/2021

⁴ Audit Report, <https://www.audit.nsw.gov.au/sites/default/files/pdf-downloads/FINAL%20Report%20>, Accessed 26/05/2021, NSW Government, Accessed 26/05/2021

A FOUNDATION OF SAFETY AND SECURITY

A safe and secure custodial environment serves as a foundation for building an environment that is conducive to rehabilitation and which promotes reductions in future offending.

The solutions outlined in this document support and build upon this foundation to drive operational efficiencies which enhance the effectiveness and capability of staff working in all types of correctional facility.



FUTURE SOLUTIONS FOR STAFF & FACILITY OPERATORS

- Enhance operational integrity & transparency of action
- Improve capability and certainty
- Relieve pressure on staff time and attention
- Enable a proactive approach to critical systems maintenance
- Improve incident response times

Prisons and justice facilities are inherently high-risk environments which require constant and unwavering oversight. While we know that there is no substitute for a team of trained and alert security and operational staff, the right integration of systems and technologies can act as a significant force multiplier, enhancing operational integrity and transparency of action.

It is a paramount consideration in all solutions and upgrade pathways that staff are provided with the best possible tools, systems and environment to safely and effectively do their jobs. The following provides a brief overview of some systems which can assist staff and prison operators as they perform the day-to-day management and oversight of the facility.

BENEFIT FROM THE POWER OF PHYSICAL SECURITY INFORMATION MANAGEMENT

Building on the functions of a traditional security management platform, a Physical Security Information Management (PSIM) platform significantly enhances the ability of the Security Operator to manage day-to-day activities and respond to incidents more effectively as it integrates security applications and devices and control them via a single, unified interface.

PSIM software provides a platform and application suite to collect and correlate events from existing disparate security devices and information systems (such as perimeter systems, video, analytics, access control, duress, sensors, building systems and more) to empower Security Operators to identify and proactively resolve situations from a single operator console.

DIGITISED AND INTEGRATED STANDARD OPERATING PROCEDURES FOR EFFICIENT INCIDENT RESPONSE

One of the most critical roles undertaken within the Master Control Room by the Security Officers is responding to incidents, whether Code Blue or Code Green, the way they respond is critical to managing life safety and security throughout the prison. Various measures can be introduced to reduce response time, enable collaboration between stakeholders and transparency of workflow.

Digitised and integrated Standard Operating Procedures for critical incidents such as officer duress can ensure the correct procedures are followed, with faster response time through one-click call-up of surveillance, real-time locating systems (RTLS) for identification of location and integrated communications gateway for ease of collaboration across a variety of devices – radios, phone, intercoms, duress and CCTV surveillance.

PSIM BENEFITS



ENHANCED SECURITY AND CONTROL



FASTER RESPONSE TO INCIDENTS



OPERATIONAL TRANSPARENCY



INTEGRATED WORKFLOWS



GREATER SITUATIONAL & CONTEXTUAL AWARENESS



EASIER COLLABORATION

TREND ANALYSIS & INTEGRATED ALARM, ASSET AND VIDEO MONITORING

Through the use of integrated artificial intelligence and machine learning technologies with building automation and video surveillance systems, many kinds of unusual or anomalous incidents can be detected and an appropriate alert sent to operational staff to help reduce incidents.

In advanced applications, the system is able to learn the typical behaviours of the prisoners within the facility and bring to the attention of staff any unusual deviations from these typical behaviours. For example, a group of prisoners congregating in an unusual location or at an unusual time may generate an alert which warrants further investigation by appropriate security officers, contraband concealment or vandalism.

Alternatively, applying facial recognition and virtually tagging prisoners for ease of identification can enable more efficient authorised secure movement, ease identification during conflicts and overall risk management.

TREND ANALYSIS & ENHANCED SURVEILLANCE

Integrated machine learning and artificial intelligence capability can be a low-barrier-to-entry upgrade option as it requires little in the way of additional equipment other than suitable computer hardware within the control room in order to run the AI software package. AI deployment can be used to monitor CCTV footage or, alternately, can be used to monitor prisoner conversations within the facility or via telephone/online communications.⁵

While the technology is usually compatible with existing CCTV systems and cameras, upgrading some cameras may be advised as performance of the technology is correlated to the clarity of video signals it processes.



Helps to provide prison control and management teams with a complete picture of the facility and the people, assets and activities occurring within.



Provides security operators with a whole-of-facility awareness and alerts staff to unforeseen or unusual conditions within the facility.

AUTOMATED & REMOTE ASSET CONDITION MONITORING

The right combination of sensors and monitoring can greatly enhance the up-to-the-moment accuracy and visibility of prison asset conditions while simultaneously reducing the burden on staff to physically inspect and test these assets.

Through integration with the facility's maintenance management system, maintenance schedules can be dynamically updated and appropriate teams directed to specific assets in need of attention. This assists in optimising the value of proactive maintenance services, reduces the need for reactive maintenance and call-outs, and helps to increase overall system reliability.

SELF-MONITORING & TESTING TECHNOLOGY

Some examples of self-testing technologies include cameras with image interference detection and PTZ (Pan, Tilt and Zoom) test capabilities, as well as fire and smoke detectors with self-test capabilities.

Systems which include self-monitoring and testing capabilities can improve the operations of a facility in two ways:

- Providing more accurate condition data to the asset management system than periodic inspections, informing proactive maintenance strategies and providing as early a warning as possible of potential asset failure.
- Reducing the need for physical inspection of assets by staff, in turn reducing their need to enter into secure spaces or individual cells.

⁵ <https://www.abajournal.com/news/article/prisons-and-jails-use-artificial-intelligence-to-monitor-inmate-phone-calls>

SECURE WIRELESS ENABLED SERVICES

When done the right way, wireless connectivity throughout correctional facilities brings numerous benefits for prison operators and on-site staff. This connectivity includes both WiFi as well as 4G/5G services, based on the needs of the facility and environmental considerations.

Secure wireless service can be a turn-key technology which unlocks advanced opportunities for additional integrations, such as:



STAFF TABLET/MOBILE DEVICE INTEGRATION

Enables staff regardless of specific location to receive real-time data updates and maintain constant contact with the control room.



ON-BODY CAMERAS

In addition to statically mounted camera systems, video feeds from on-body cameras can be integrated directly into the facility's video monitoring systems, helping to enhance operational awareness for all staff and reducing overall reaction times.



DRONES & AUTONOMOUS VEHICLES

It's not just the places that staff and prisoners are that need a watchful and vigilant eye – it's all the places they can't get to as well. Robust wireless data networks enable the use of autonomous security vehicles to monitor perimeter security and drones to inspect the condition of rooftops and other inaccessible assets..

WIRELESS INTEGRATION OF AUTONOMOUS SECURITY VEHICLE (ASV) AT EASTERN GOLDFIELDS PRISON, WA

Enabled by Secure Wireless technology, ASV services were recently deployed at Eastern Goldfields Regional Prison in Western Australia.⁶

The autonomous vehicle is tasked with inspecting, testing and confirming the integrity of the prison's perimeter, a process which has historically required two staff to check the fence and security system three times a day, while another officer also confirms the alarms. The vehicle can also relay real-time location and status information to provide greater situational awareness.



⁶Autonomous vehicle to patrol perimeter at Eastern Goldfields Regional Prison - ABC News <https://www.abc.net.au/news/2020-07-01/autonomous-vehicle-to-patrol-wa-prison-for-the-first-time/12383646>

FUTURE SOLUTIONS FOR PRISONERS

- Enhance operational integrity & transparency of action
- Improve capability and certainty
- Relieve pressure on staff time and attention
- Proactive critical systems maintenance
- Improve incident response times

The prison of the future will be a space which feels very different from the traditionally spartan compositions of the past that were defined by concrete walls and rows of barbed wire – it will be a place of rehabilitation and self-improvement for prisoners, with the goal of reducing recidivism rates.

To that end, Honeywell develops its approach to prison system upgrades solutions that benefit the prisoners as a primary stakeholder group.

ENHANCED LIFE SAFETY SYSTEMS

Secure containment is vital in maximum security environments but it does present some challenges in supporting the safety and health of prisoners while also providing them with some measure of comfort and privacy.



SELF-TESTING SENSORS & SURVEILLANCE

Every time a cell door is opened and entered to perform a routine check on a prison asset, it is not only an intrusion on prisoner privacy but also a burden on custodial staff to facilitate the check due to the inherent life safety risk.



HEALTH & SAFETY MONITORING

Having autonomous monitoring of prisoner health can help to increase overall levels of health and safety vigilance throughout the facility while reducing the burden on security staff to monitor the wellbeing of prisoners through individual cell inspections. The monitoring system can also help to identify and alert staff to unusual prisoner behaviours, particularly focused on early detection and prevention of self-harm or suicide attempts as they are in progress.

INCREASED ACCESS TO EDUCATION & TRAINING

Research has shown that education is one of the primary ways to help reduce recidivism.⁷ Many offenders are from low socioeconomic backgrounds with low levels of education. The cost of implementing technology to tackle rehabilitation and recidivism is a small fraction of the cost of incarcerating repeat offenders.

The Honeywell prisoner interactive learning system lets inmates securely access e-learning content, authorised TV services, e-visits and more from their cells or a supervised environment. This technology empowers them to further their education and prepare for re-entry into society.

Giving prisoners the ability to self-manage approved activities reduces the burden on custodial staff as, instead of having to facilitate all prisoner movement and actions, prison staff can focus on more value-added activities.

⁷ Champion, N., & Edgar, K. (2013). Through the Gateway: How Computers Can Transform Rehabilitation. London: Prison Reform Trust and Prisoners Education Trust.

FUTURE SOLUTIONS FOR FACILITY VISITORS, POLICE PERSONNEL & SOCIAL WORKERS

- Seamless and secure facility access management & contraband detection
- Maintain safety while moving through the facility
- Increase ease of access for social workers & rehabilitation professionals

VISITOR MANAGEMENT

The success of the prison of the future as a place of rehabilitation will be reliant upon on the contributions of many people with diverse skills to succeed.

This includes the police personnel who facilitate prisoner movements to and from the facility, social workers who enter the facility to work directly with inmates to enhance rehabilitation outcomes, and the regular stream of visitors whose presence helps inmates maintain a connection to the wider community for the duration of time they are incarcerated.

With capabilities beyond a traditional paper-based visitor management system, a digital workflow solution for visitor management can tighten safety, security and compliance while also providing real-time operational transparency for Intelligence Officers. Additionally, a fast-track check-in procedure with embedded safety information can help ensure adherence to health and safety procedures and inductions, particularly for Contractors.



ENHANCED VISIBILITY & FACILITY AWARENESS

A key advantage of integrated systems is the enhanced whole-of-facility visibility that it enables for operational staff and security officers.

This means that the movements of visitors to the facility can be tracked and monitored, which can help to improve safety for the visitor, improve response times in the event of an incident and allow control room staff to track visitor movements alongside other staff and prisoners.



CONTRABAND DETECTION: BAGGAGE, ACCOUTREMENT AND FULL-BODY SCANNERS

Traditional screening technologies can be cumbersome and require facility visitors to remove baggage or other accoutrements to conduct the required screening. In some high security cases, visitors may be required to undergo more invasive searches.

Emerging imaging technologies which use non-visible wavelengths of light (which share some capabilities with traditional x-rays in terms of seeing through usually opaque objects) combined with 3D modelling and visualisation techniques enable significantly improved contraband detection and prevention while reducing the need for visitors to empty bags or remove other articles of clothing to facilitate the screening process.

SECURE WIRELESS INTEGRATION FOR FACILITY VISITORS

Where appropriate, visitors to the facility operating in an official capacity can be issued with similar wireless device access to prison staff. For example, on-body camera systems or mobile devices integrated into the wider facility management system.

- Design future-ready facilities
- Create more efficient and sustainable facilities
- Reduce likelihood of incidents affecting communities
- Focus on long-term reduction of recidivism rates

We believe strongly that any justice and corrections facility must serve the needs of the community in which it operates. This involves creating solutions which enable virtual courtrooms and allow prisoners to more easily maintain connections with their family and social networks while simultaneously using technologies which enable facilities remain secure, reducing the impact on the communities in which they operate.

DESIGNING FOR FUTURE-READY FACILITIES

As the expectations of government and the wider community continue to shift towards a more connected vision of future justice, it's critical that facilities are designed with a view to providing a solid foundation of robust information and communications technology that can bring this to fruition.

We are constantly finding new ways to work with professionals around the globe to design and develop the systems which will enable the prisons of the future to offer more flexible, connected and effective services that serve the needs of government, the community and prisoners alike. This approach and commitment to increasing the value of the facilities that we partner with underpins everything that we do.

MORE EFFICIENT AND SUSTAINABLE FACILITIES

No matter what size facility or the challenges it faces – from more inmates, fewer funds and aging buildings – our systems can help operators to achieve more with less without compromise to safety and security.

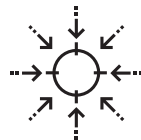
A major consideration of our approach to supporting corrections facilities is to reduce the costs of operating the facilities. This includes reducing financial costs through more effective value management of maintenance and utility costs, as well as the optimisation of operating budgets over the long term.



REDUCING LIKELIHOOD OF INCIDENTS AFFECTING COMMUNITIES

Another way that our solutions can protect the community is by providing multiple redundant perimeter monitoring solutions which provide additional certainty that any incidents that do occur are safely and effectively contained.

We are able to design, develop and deploy multiple perimeter monitoring systems, including microwave-based and photoelectric beam sets, as well as other detection and monitoring technologies which work together to create a virtual fence to augment physical containment of the facility.



LONG-TERM FOCUS ON REDUCING RECIDIVISM

The cost of implementing technology to tackle rehabilitation and recidivism is a small fraction of the cost of incarcerating repeat offenders – and it's not just the technology focused on the prisoners themselves which can contribute to this goal.

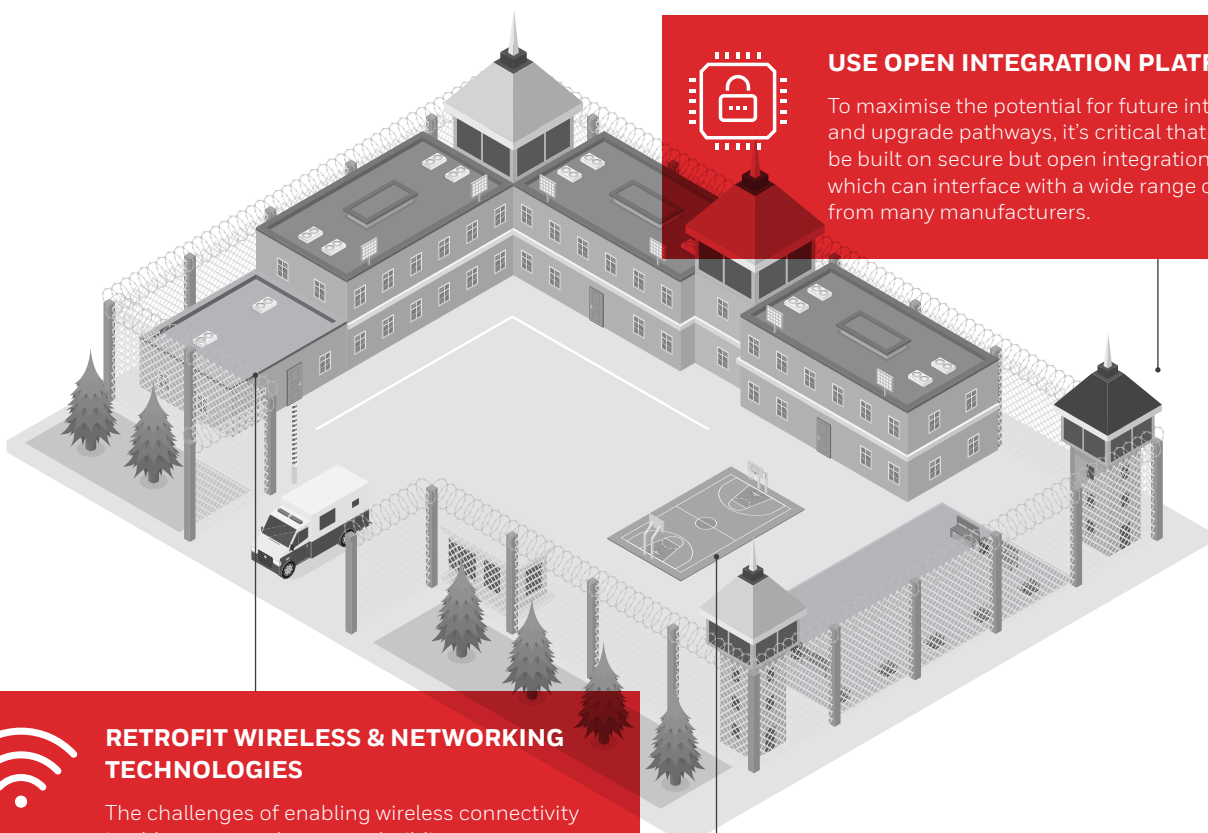
Every minute which smarter technologies and integrated systems can save for staff members is one more minute that those same staff members have to focus on prisoner's actual needs. This staff attention is a critical ingredient in maximising the outcomes for prisoners and the community alike, and a key focus of our approach to realising the vision for future prisons.

REHABILITATING AGING INFRASTRUCTURE

It's not only the staff and prisoners who can benefit from a therapeutic approach to rehabilitation. Often the prison infrastructure itself needs intervention and improvement.

The ongoing and inevitable march of time means that older prison facilities are increasingly out of touch with a contemporary approach to corrections environments. To enable a movement towards the future vision for prison infrastructure, contemporary systems and technologies must be made accessible to older facilities through secure, proven and iterative upgrade pathways.

As the capacity of the justice system expands to meet demand, critical funding is often absorbed by the creation of new facilities, leaving precious little left over to upgrade and enhance existing infrastructure. This can further exacerbate the challenges inherent to older sites by squeezing already stretched budgets, and further limiting the potential pathways forward.



USE OPEN INTEGRATION PLATFORMS

To maximise the potential for future integration and upgrade pathways, it's critical that systems be built on secure but open integration platforms which can interface with a wide range of devices from many manufacturers.



RETROFIT WIRELESS & NETWORKING TECHNOLOGIES

The challenges of enabling wireless connectivity in older stone and concrete buildings can be overcome through augmented wireless technologies designed to operate in RF-poor environments. Where required, independent microprocessors can be incorporated into stand-alone devices to minimise the amount of data required to be transmitted or received.



DEPLOY SCALABLE & FLEXIBLE INTEGRATION PLATFORMS

As we continue to implement improvements to the function and effectiveness of prisons, the expectations of prisons and the needs of staff and inmates alike will continue to evolve into the future. The systems used to manage prison operations must be able to grow and adapt to these changing expectations to deliver ongoing value.

ENABLING THE ADOPTION OF CHANGE AND INNOVATION

At Honeywell, we believe in our message that the future is what we make it, and prison infrastructure is no exception. Wherever a facility is in its journey toward being a contemporary corrections facility ready to face the challenges of tomorrow, Honeywell can help prison operators to move towards a connected and integrated prison that better serves the needs of all users and staff.

We integrate systems to enable a holistic approach to operations and allow smaller teams to more effectively oversee complex facilities, from high-security to juvenile justice and justice precincts.

We understand the challenges of rolling out new systems and integrations within controlled environments and offer a suite of safe and proven upgrade pathways which can be tailored to any facility's needs space and existing environmental limitations.

TOTAL LIFECYCLE ASSET MANAGEMENT



- Our holistic approach and asset lifecycle forecasting capability typically leads to cost reductions in range of 10–15% across facility lifetimes
- Immediate and up-to-the-minute asset condition reports enable better management of CAPEX and OPEX budgets and can spread asset replacement costs across longer operational periods
- A lifetime costing approach can unlock more rapid systems upgrade pathways by offsetting purchase cost against reduced long-term maintenance and operational costs

CHOICE IN PROVIDERS AND PARTNERS



- Honeywell's solutions are built on open integration platforms which can incorporate third-party technologies, unlocking multiple pathways for potential future upgrades
- We have proven integrations to more than 60+ third-party subsystems in justice and corrections environments.
- Honeywell's Approved Servicing Network helps to ensure that the right support is available from a local contractor pool for facilities, whatever their location

SCALABLE PLATFORMS OVER FACILITY LIFETIMES



- Systems such as Honeywell's Computerised Maintenance Management System (CMMS) can be expanded over time as the requirements and needs of the facility change
- Where possible, we prioritise delivery of robust data infrastructure solutions which allow for future developments and expansion of services as needs evolve over time

SMARTER INTEGRATIONS FOR ENHANCED OPERATIONAL INTELLIGENCE



- Where facilities contain a range of secure spaces, shared spaces and functional spaces, attentive and thorough interface management is critical to maintaining secure operations
- Smart systems can help maintain operational intelligence and security by providing the right intelligence to the right people, enabling proactive risk management that can pivot dynamically if circumstances change

HOW HONEYWELL CAN HELP

In addition to creating new facilities based on leading practices, Honeywell is committed to providing pathways to modernise existing facilities so operators can benefit from the latest proven innovations.

Honeywell brings a suite of technologies, systems and practice which have been developed, trialled and proven in numerous prisons and corrections environments across the globe.

Our holistic approach looks at the needs of all prison users, from the staff and operators through to facility visitors and the wider community, and provides benefits for all prison user and operator groups as outlined below.

MORE ENERGY EFFICIENT FACILITIES



Honeywell Forge Energy Optimisation provides site wide energy management capabilities that monitors gas, water, and electricity for individual buildings and services. For example, at Eastern Goldfields Prison WA, we were able to use Honeywell's EBI Energy Manager to reduce energy consumption by 31% over the course of six months, while simultaneously rolling out a suite of new and enhanced services including our Physical Security Information Management (PSIM) and a secure wireless communications network.

IMMEDIATE AND LONG-TERM CHANGE MANAGEMENT



As the integration and automation systems often directly impact the standard operating procedures within a facility, it is critical that appropriate change management processes are deployed at all stages of the technology upgrade process to effectively mitigate risk and create minimal impacts to staff and operational safety.

As a trusted technology partner with a total systems and asset management focus, Honeywell is ideally positioned to assist facility operators to maintain safety by mitigating risks associated with automation system change, increase efficiency through streamlining the management of change process and to meet relevant regulatory compliance.

IMMEDIATE AND LONG-TERM VALUE



At Honeywell, we believe strongly in industry collaboration and the sharing of best practice when it comes to vital infrastructure such as Australia's prisons and correctional facilities. We can help a facility to develop and implement a forward technology roadmap and strategy for innovation adoption.

As a trusted technology and services partner, Honeywell is committed to helping position the facilities we work with for the future and are primed to get the maximum ROI from all current and future investments.

OPTIMISED LIFECYCLE VALUE



Honeywell is ideally positioned to offer value-managed solutions which can help to reallocate portions of OPEX budgets to invest in newer systems and technologies that offer reduced ongoing costs for better long-term value.

This approach is informed by predictive asset lifecycle analytics and is underpinned by many years of experience and industry-leading research and development.

WHY HONEYWELL?



ENHANCED SAFETY
and security



10-30%
reduction in
energy costs



10-15%
lower lifecycle costs



SERVICES AND SOLUTIONS
to help reduce
recidivism



UNRIVALLED DOMAIN EXPERTISE

30+ years
Global and local
reporting Technicians
& software engineers
around the globe



75+
Justice & Correctional
facilities globally



5,000+
Critical infrastructure locations benefit from
Honeywell's industrial cybersecurity solutions

PROVEN INTEGRATION PLATFORM

provider for critical
infrastructure



REDUCE RISK

Holistic approach
to critical asset
management, reducing
risks and costs



* If moving from unintegrated point solutions to Honeywell PSIM.

Results are not necessarily typical and are based on Honeywell "before and after" analysis at selected customer sites. Such analysis compared site performance before deployment of Honeywell solutions to post-deployment performance, without controlling for other factors that may have affected results. Your results may vary.

To learn more about what your correctional facility can achieve with Honeywell, please visit buildings.honeywell.com

For more information

buildings.honeywell.com

Honeywell Building Technologies Pacific Head Office

Level 3, 2 Richardson Place,
North Ryde, NSW 2113
Phone: +61 2 9353 7000
www.Honeywell.com

Corrections_WP | 07/21
© 2021 Honeywell International Inc.

**THE
FUTURE
IS
WHAT
WE
MAKE IT**

Honeywell