

## MAXPRO® NVR XE (Xpress Edition)

8/16-Channel Entry Level Network Video Recorder (NVR)

Honeywell's MAXPRO NVR XE is an ideal solution for entry into IP video surveillance systems. MAXPRO NVR XE utilizes Honeywell's HD cameras to offer a powerful high definition IP recording and security monitoring system for small installations.

### Open – Broad Device Integrations

- Integrates to full line of Honeywell IP cameras and HVE encoders
- Support for ONVIF Profile S and Profile G, PSIA, real time streaming protocol (RTSP) standards
- Native device integrations supporting eQIP® Series cameras' new features: 4K resolution, H.265 video compression codec, 3D PTZ control, 360° camera and multi-imager camera support, and intelligence events

### Easy to Install and Use - Turnkey Solution

- Pre-installed with all required software and pre-licensed for 8 or 16 channels with no extra channel license costs
- Easy 3-Click\* wizard to live video for auto configuration - quick and efficient IP system install
- Simple and logical configuration pages make setup a breeze even for the novice installer
- Supports simultaneous recording, live monitoring, search and system management for up to 8 or 16 IP cameras including high definition formats with easy to use clients
- Easy to use desktop clients, web client and mobile apps
- Intelligence events from cameras can be viewed at the alarm panel, and trigger recording on MAXPRO NVRs for further investigation
- Learn One, Know them All - Common feature-rich user experience across the MAXPRO NVR Family and MAXPRO VMS / Viewer provides familiarity across a broad range of Honeywell products saving training costs

\*With default settings and in a local area network for specific models

### Scalable Integrated Security Solution

- Multiple MAXPRO NVRs deployed for system expansion using a distributed architecture and integrated with the MAXPRO Viewer multi-site software or MAXPRO VMS enterprise video management system



- Integration with Honeywell WIN-PAK® and Pro-Watch® Access Control Systems providing an integrated Access Control, Intrusion and Video solution

### Simple NVR Hardware

- Provides the processor and storage enclosure in one chassis, resulting in both space and cost savings
- Small desktop type footprint suitable for small spaces with internal fixed drives, SATA hard drives used for operating system partition and video storage
- Dual 1 GB NICs are optimized to separate record and viewing data to ensure 100% recording and smooth playback even with multiple client connections

## MARKET OPPORTUNITIES

The continual growth of cost-effective IP networks and the demand for HD video offered by IP cameras have led to the need for entry level IP surveillance solutions. This has resulted in a strong demand for an all-IP end-to-end security system deployment. MAXPRO NVR XE provides an easy entry into IP-based systems and the operational power to address the needs of a wide variety of applications including healthcare clinics, small commercial and retail, property management and many other applications. When the need is for an easy to install, simple to use, and feature rich entry level network video recorder, the solution is MAXPRO NVR XE.

# MAXPRO® NVR XE (Xpress Edition)

8/16-Channel Entry Level Network Video Recorder (NVR)

## SOFTWARE FEATURES

### Multi-Platform Support

- Allows local or remote operations including live and recorded video monitoring, configuration and system management in a single desktop client interface.
  - Support for Web Client on Windows PC (Internet Explorer, Chrome and Firefox browsers) and Mac (Safari browser). Supports live, playback/search of recorded video for up to 4K resolution on all cameras, taking snapshots and viewing presets for PTZ cameras.
  - Support for mobile monitoring clients on iOS and Android Phones and Tablets with MAXPRO NVR apps: Login securely with https communication, Create favorite salvos (cameras up to 3x3 on tablets and 2x4 on phones per salvo). View Live and Recorded Video, Perform PTZ control through Presets and Monitor & Manage Alarms, Support Touch ID on iOS devices for fast and secure login.
- \*H.265 is not currently supported on Web client and mobile Apps.

### Enhanced Monitoring with Desktop Clients

- Multi-zoom views on HD video and support for Profile cameras to create virtual cameras by digitally zooming into the field of view. Example: Zoom in on a cash register in one view of the HD camera while at the same time monitoring the cash operator in the zoom out view of the HD camera.
- Ability to investigate events and alarms by simultaneously viewing alarm videos at various stages. For every alarm, users can view the video captured during pre-alarm, on-alarm, and post-alarm, and also view live video from the camera which triggered the alarm.
- Enriched video viewing experience through the intuitive video rendering engine that optimizes CPU utilization by altering the video frame rate.
- Cost-effective enhanced H.264 and H.265 HD video rendering on remote desktop clients with support for monitoring of up to 23 1080p HD cameras in real time (30 fps)/690 fps 1080p HD with no-time lapse using the GPU capabilities of in-built processor graphics with 6th generation Intel® Core™ Processors for client systems. Up to 4 1080p HD @ 30 fps/120 fps on local client.
- Video Surround feature simplifies the process of tracking subjects through a set of surrounding cameras.
- Create, save and name salvos under My Salvos or Shared Salvos. Support for aspect ratio - 16:9, 4:3 and Stretched for video salvos.
- Support for 3D Positioning to allow the operator to pan, tilt and zoom into a specific region of interest efficiently by just clicking the live view window.
- IP PTZ control and digital zoom on fixed cameras. 360° viewing experience and 180° stitched view of equiP multi-imager cameras providing heightened situational awareness and increased video surveillance coverage.
- Support for auto switching of streams utilized by the client with multi-stream cameras, saving workstation hardware cost by displaying more cameras simultaneously with lower resolution streams instead of the primary HD streams.

- Support for On-Demand Live Streaming to save connectivity costs by stopping camera streaming to the NVR when no NVR clients request live viewing.
- Network throttling options for optimized streaming and client rendering under low bandwidth without interrupting critical business data transfers in the same network.

### React Fast and Protect your Assets

- Fast search by date/time, enhanced time line, time jump, bookmarks, SMART Motion search, calendar, preview, film strip view and events. Increase productivity with more efficient search/investigation: Get to the relevant video in few clicks without having to review hours of recordings.
- SMART Motion search – Fast and efficient forensic search and investigation for objects/motion on recorded video using Honeywell SMART motion detection Analytics algorithms on the Client PC without impacting the NVR Server load.
- Capture and export clips and still images in simple .wmv, .asf, .mpvc and .bmp formats. Clips (.wmv) signed with digital signature for authentication.
- MAXPRO Video Container (.mpvc) format support - only playable in MAXPRO desktop clients and standalone Clip Player, quicker exports of raw video and support for estimating clip size and split to multiple clips to ensure clip storage media matches, include clip player with exported clip for easier review of video evidence and efficient investigation.
- Clip Player – Portable standard secure player for archived and exported clips (\*.mpvc), 360 camera de-warping and 2x2 Salvo support, Smooth playback support with up to 256x review speed, No software installation required to run on a Windows PC, option to include with clip export.
- Email notification on camera, system and operator events.

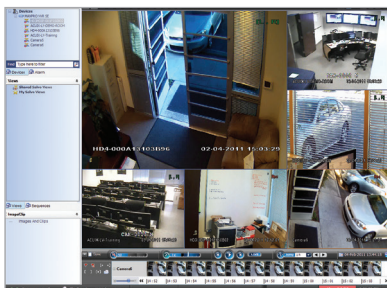
### Enhanced Recording Engine

- Separate event video, continuous recording and archived video retention times.
- Flexible Motion detection (VMD) options with Server (SMART VMD) or Camera based motion events support. Reduced false alarms with object based motion detection analytics with SMART VMD.
- Video Archival - Archive large amounts of recorded Video data for long term storage either scheduled or manually, review through NVR desktop client or standalone Clip Player.
- Multi-stream support - Support multiple streams from camera for varying resolutions and frame rates for live, recording, low bandwidth desktop clients, web clients and mobile apps.
- Single channel license\* for Encoders and Multi-imager 360 cameras (\* - Max system capacity of 64 channels).
- Support for scheduled backfilling of the recordings from the edge storage of equiP 1080p IR PTZ, 1080p WDR and 4 MP WDR cameras to the NVR using ONVIF Profile G for robust recording against temporary network failure.
- 1+1/N+M recorder failover and failback automatically or manually with MAXPRO VMS.

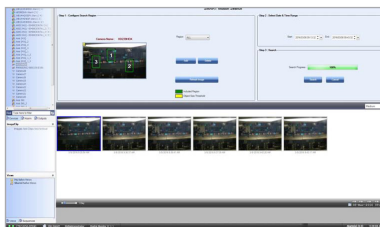
### More Great Software Features

- Easy to use and enhanced camera configuration and discovery workflow – Reduce over configuration using NVR System.
- Load and Storage Calculator and ensure the system is configured to meet requirements for retention and reliability.
- Status Monitor – Save operational costs with an integrated Dashboard to easily monitor the health and recording status of all the MAXPRO NVRs from any workstation or PC in the network.
- Role-based operator privileges supporting Windows and local users.
- Advanced security features with encryption support for communication between desktop client to NVR and secure https login for Web Client and Mobile apps.
- Keyboard control with UltraKey Plus and UltraKey Lite over Ethernet.
- Event history and operator log reporting with export to PDF, Crystal Reports, Excel or Word.
- Local and multi-language support.
- Support for secured communication between MAXPRO NVR and VMS, server and client.

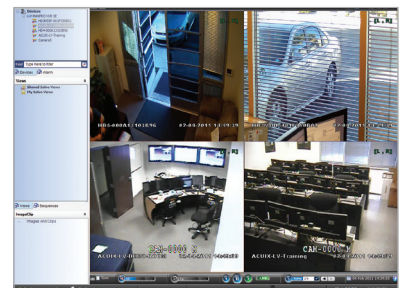
6 Split



SMART Motion Search



Quad



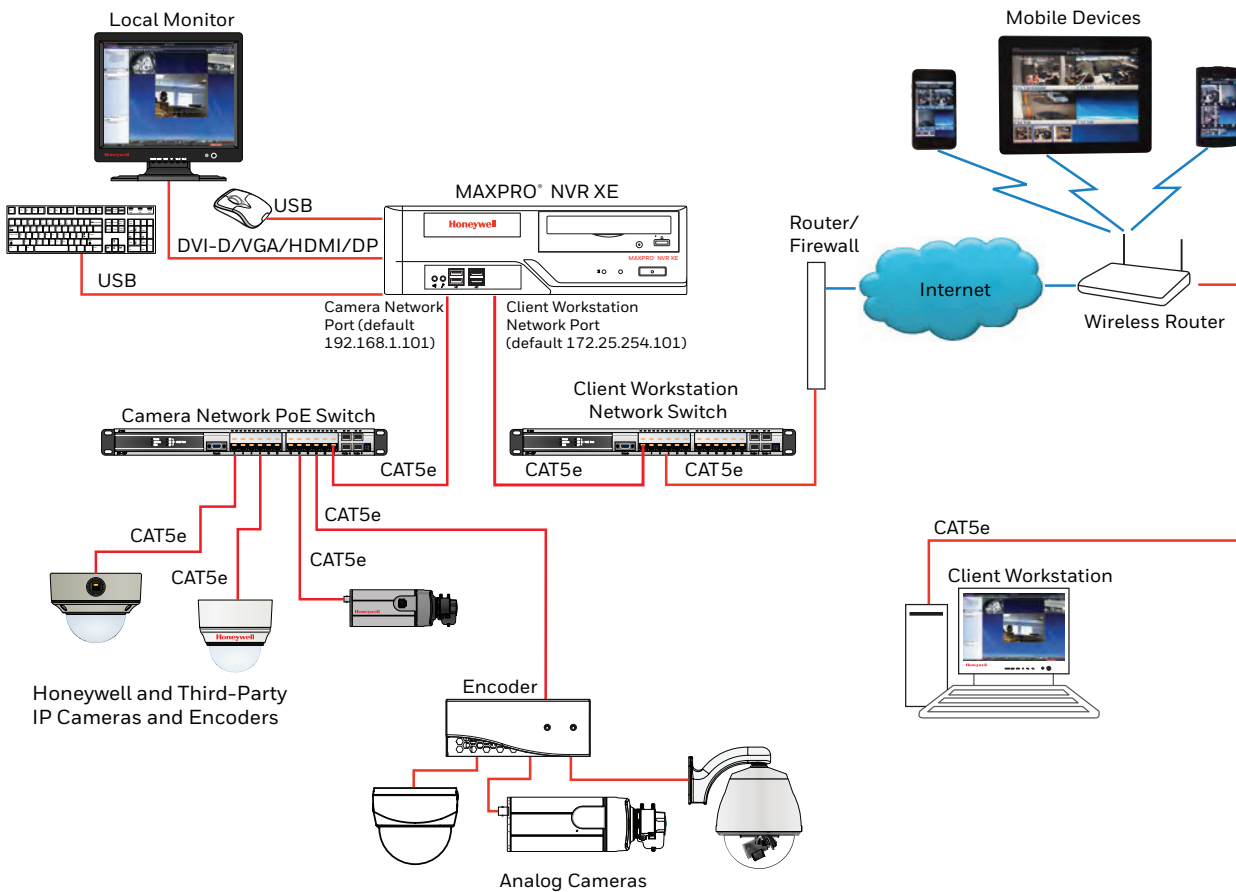
# MAXPRO® NVR XE (Xpress Edition)

8/16-Channel Entry Level Network Video Recorder (NVR)

## HARDWARE FEATURES

- Each unit records and monitors up to 8 or 16 cameras at 480 fps @ 4CIF/VGA or 480 fps @ 720p HD or 480 fps @ 1080p (4 Mbps bitrate) HD. Network bandwidth/throughput supported per NVR with Incoming: 65 Mbps, Outgoing: 180 Mbps; Total: 245 Mbps.
- Archival support of 16 channels @ 4 Mbps bitrate each / 64 Mbps total archival throughput capacity per MAXPRO NVR XE, with outgoing archival storage throughput of 200 Mbps
- Multi-stream support with maximum 128 streams per MAXPRO NVR XE. Support for configuring 1 preferred stream for continuous recording and 1 preferred stream for live video / motion based recording per camera
- Supports One-Way Audio (for specific IP cameras) with live, playback and clip export on desktop clients for up to 8 or 16 IP channels
- Includes HDMI, VGA, DVI-D and Display ports for single local monitor support providing access to monitoring and configuration interface
- Supports displaying 16 cameras at one time on the NVR local monitor and rendering performance using GPU of up to 4 1080p HD @ 30 fps/ 120 fps on local client.
- Internal storage capacity of 1 TB/2 TB/3 TB/4 TB/6 TB/ 8 TB/12 TB
- DVD R/W drive for burning evidence clips. Includes dual 1 GB Network ports optimized to separate record and viewing data to ensure 100% recording and smooth playback even with multiple client connections.
- Small desktop type footprint suitable for small spaces

## SYSTEM DIAGRAM



# MAXPRO® NVR XE (Xpress Edition)

8/16-Channel Entry Level Network Video Recorder (NVR)

## SPECIFICATIONS

OPERATIONAL		OPERATIONAL	
<b>MAXPRO NVR SOFTWARE - VERSION 4.5 OR ABOVE</b>		<b>MAXPRO NVR XE HARDWARE</b>	
<b>DATABASE</b>	Microsoft® SQL Server® 2012 Express	<b>PROCESSOR</b>	Intel® Core™ i5-4460, 3.2 GHz, Intel® HD Graphics 4600
<b>OPERATING SYSTEM</b>	Windows 10 IoT Enterprise for Embedded Systems	<b>MEMORY</b>	8 GB
<b>IMAGE COMPRESSIONS SUPPORTED</b>	MJPEG, MPEG-4, H.264, H.265	<b>POWER SUPPLY</b>	Single 300 W
<b>SUPPORTED HONEYWELL IP CAMERAS AND ENCODERS</b>	Supports Performance Series IP, equip® Series cameras. Refer to <a href="http://www.security.honeywell.com/hota/compatibility/index.html">www.security.honeywell.com/hota/compatibility/index.html</a>	<b>STORAGE CAPACITIES</b>	1 TB, 2 TB, 3 TB, 4 TB, 6 TB, 8 TB or 12 TB
<b>SUPPORTED THIRD PARTY IP CAMERAS AND ENCODERS</b>	Refer to the MAXPRO NVR Compatibility for a comprehensive list of compatible products to which this device is integrated. <a href="http://www.security.honeywell.com/hota/compatibility/index.html">www.security.honeywell.com/hota/compatibility/index.html</a>	<b>OPTICAL</b>	22x DVD-RW
<b>AUDIO SUPPORT</b>	1-way audio for specific IP camera models. Refer to <a href="http://www.security.honeywell.com/hota/compatibility/index.html">www.security.honeywell.com/hota/compatibility/index.html</a>	<b>NETWORK</b>	Two 1 GB Ethernet included
<b>MAXIMUM NUMBER OF DESKTOP CLIENT CONNECTIONS</b>	Desktop Client - 18 remote per unit from 9 remote workstations + 1 local on NVR server	<b>MOUSE AND KEYBOARD</b>	USB
<b>SALVO LAYOUTS</b>	Desktop Client – Full, 2x2, 1x5, 3x3, 2x8, 1x12, 4x4. Web Client – 2x2, 1x1, 1x2, 1x3. Mobile app (Phone) – 2x2, 2x4, 1x2, 1x1. Mobile app (Tablet) – 3x3, 2x2, 1x1.	<b>REAR PANEL CONNECTIONS</b>	
<b>PICTURE CONTROLS PER CAMERA</b>	Sharpness, blur, brightness, contrast, hue, saturation, maintain aspect ratio, stretched, original size and picture mirror	<b>USB</b>	4 Front, 4 Rear
<b>OSD</b>	Concealed text option	<b>NETWORK</b>	2x RJ45
<b>PLAYBACK CONTROLS PER CAMERA - DESKTOP CLIENT</b>	FWD/REV Play x (1, 2, 4, 8, 16) Slow FWD/REV Play x (1/2, 1/4, 1/8)	<b>MONITOR OUTPUT</b>	Single monitor support-1 HDMI, 1 VGA, 1 DVI-D, 1 Display port
<b>SEARCH TYPES</b>	Time/date timeline, time jump FWD/REV, bookmarks, calendar, preview, film strip, event search and SMART Motion Search	<b>ELECTRICAL</b>	
<b>RECORDING SCHEDULE</b>	Constant and event based with H/M/D and holiday and exception days	<b>INPUT VOLTAGE</b>	115/230 VAC, 7/4 A, 60/50 Hz
<b>RECORDING METHODS PER CAMERA</b>	Constant, event based and user activated	<b>POWER DISSIPATION</b>	Average BTU rating = 320 BTU/HR Peak BTU rating = 1030 BTU/HR
<b>LIVE SETTINGS PER CAMERA</b>	Compression format, resolution and frame rate	<b>MECHANICAL</b>	
<b>RECORD SETTINGS PER CAMERA</b>	Same as live or reduced frame rate	<b>DIMENSIONS (W X H X D)</b>	13.00" x 3.78" x 15.66" (330.0 mm x 96.0 mm x 397.8 mm)
<b>CLIP FORMAT</b>	Honeywell MPVC playable with standalone MAXPRO Clip Player for faster and secure exports. WMV with digital certificate for authentication playable with Windows media player. ASF for faster exporting of longer than an hour backup clips in native compression format.	<b>WEIGHT</b>	Shipping: 23 lbs (10 kg)
<b>VIDEO CLIP AUTHENTICATION</b>	Digital signature, verification tool provided	<b>ENVIRONMENTAL</b>	
<b>MOTION DETECTION LOCATION</b>	Camera based for supported models or Server based (SMART VMD) for all models (except 360 fisheye /panomorph views)	<b>TEMPERATURE</b>	Operating: 5°C to 40°C (40°F to 104°F) Storage: -10°C to 65°C (14°F to 150°F)
<b>EVENT RECORDING</b>	Pre and post duration setting	<b>RELATIVE HUMIDITY</b>	0% to 90% (non-condensing)
<b>OPERATOR REPORTING</b>	Per user, configurator, session and viewer	<b>REGULATORY</b>	
<b>EVENT REPORT</b>	Per camera or recorder events	<b>EMISSIONS</b>	FCC Part 15, Subpart B; EN55022:2010
<b>OPERATORS</b>	1024	<b>IMMUNITY</b>	EN50130-4:2011
		<b>SAFETY</b>	ANSI/UL 60950-1; CAN/CSA C22.2 60950-1; EN60950-1:2006+A11:2009+A12:2011 +A1:2010
		<b>WARRANTY</b>	
		<b>WARRANTY AND ADVANCED REPLACEMENTS</b>	Refer to <a href="http://www.honeywellvideo.com/support/warranty/index.html">http://www.honeywellvideo.com/support/warranty/index.html</a>
<b>RECORDING AND MONITORING PERFORMANCE</b>	480 fps @ 4CIF/VGA or 480 fps @ 720p HD or 480 fps @ 1080p (4 Mbps bitrate) HD. 1-way audio for up to 8 or 16 IP channels. Network bandwidth/throughput supported per NVR with Incoming: 65 Mbps, Outgoing: 180 Mbps providing a Total: 245 Mbps. Rendering performance using GPU of up to 4 1080p HD @ 30 fps / 120 fps on local client. Note: Oncam Grandeye 360 Cameras are not supported with GPU rendering and use CPU rendering by default.		
<b>MAX VIDEO STREAMS SUPPORT</b>	Web Client: Live - 64 streams, Playback - 32 streams. Note: Live streams consumed are per camera being viewed live and duplicate live views of the same camera in multiple or same web client instance are allowed without consuming additional streams. Playback streams consumed are per playback stream being viewed and each playback stream being viewed consumes 1 additional stream. Desktop Client: Live - 256 streams, Playback/Video retrieval sessions - 32, Sync playback - 9 streams. 256 live streams limit excludes 1 stream used per camera if SMART VMD is enabled. Maximum live streams per camera is 15 with SMART VMD enabled. Mobile App: 16 streams of 1080p HD @ 5 fps each. Note: During archival operations, maximum no of playback streams recommended from Desktop Client and Web Client is 16 streams.		
<b>SERVER BASED VMD (SMART VMD) PERFORMANCE - CHANNELS SUPPORTED</b>	All 8 or 16 channels supported at 480 fps @ 4CIF/VGA or 480 fps @ 720p HD or 480 fps @ 1080p HD or total 32 Megapixel.		
<b>ARCHIVAL PERFORMANCE</b>	16 channels @ 4 Mbps bitrate each / 64 Mbps total archival throughput capacity. Outgoing archival storage throughput of 200 Mbps.		
<b>MULTI-STREAM PERFORMANCE</b>	Support for maximum 128 streams. Support for configuring 1 preferred stream for continuous recording and 1 preferred stream for live video / motion based recording per camera.		

# MAXPRO® NVR XE (Xpress Edition)

8/16-Channel Entry Level Network Video Recorder (NVR)

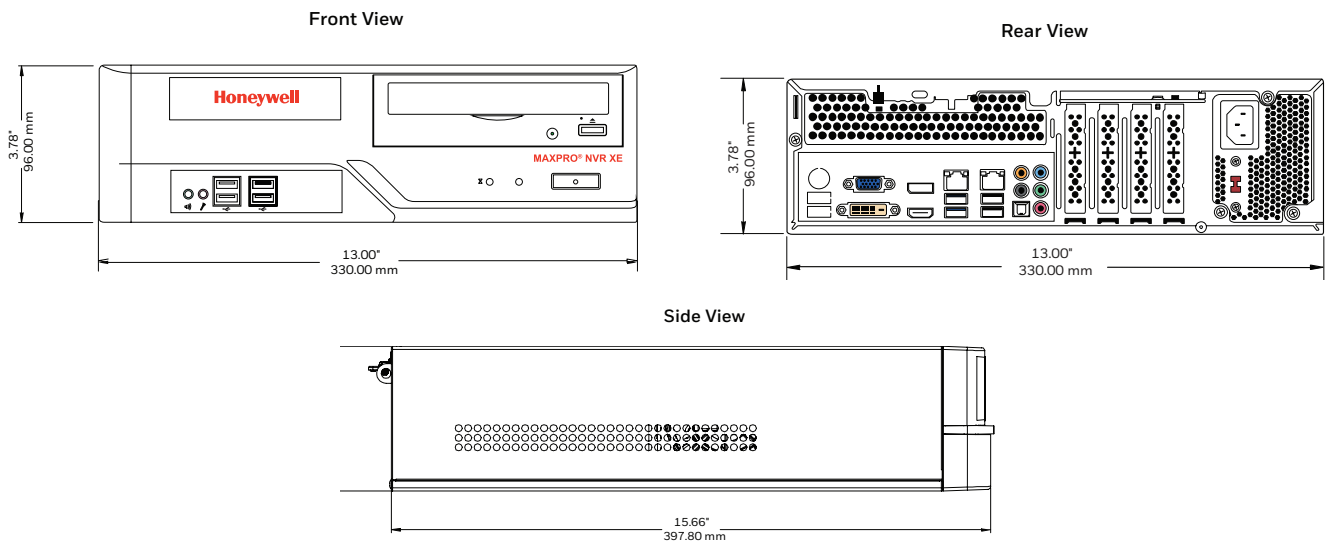
## SPECIFICATIONS

MAXPRO NVR Desktop Client Only Workstation—Specifications			
PERFORMANCE CONFIGURATION	With GPU Rendering Capability*		Without GPU Rendering Capability
	Minimum	Recommended	Recommended
PERFORMANCE CONFIGURATION	Up to 13 1080p HD Cameras, 1 Monitor (390fps @1080p HD)	Up to 23 1080p HD cameras, 2 Monitors (690fps @1080p HD)	Up to 9 HD Cameras (1 selected panel only, Throttle Frame Rate setting enabled)
PROCESSOR	Intel® Core™ i5-4460 or equivalent 4th generation Intel® Core™ Processors for client systems	Intel® Core™ i7-6700 or equivalent 6th generation Intel® Core™ Processors for client systems	Intel® Core™ 2 Duo Processor E6750 2.66 GHz or Quad Core Intel® Xeon® E5405 2.0 GHz
GRAPHICS ADAPTER	In-built Processor Graphics (GPU):Intel® HD Graphics 530, 4600, or equivalent		512 MB or higher Display Card (Optional)
SYSTEM MEMORY (RAM)	8 GB		4 GB
OS & APPLICATION – HARD DISK DRIVE OR PARTITION	Minimum 100 GB Partition drive or separate hard drive		
NETWORK INTERFACE	Minimum – 1 Gigabit network interface card		
OPERATING SYSTEM	Microsoft® Windows 7 Professional SP1, Windows 8.1, Windows 10 (64bit)		Microsoft® Windows 7 Professional SP1, Windows 8.1, Windows 10 (64bit/32bit)
OPTICAL DRIVE	DVD-RW		
MONITOR RESOLUTION	Video resolution 1280x1024 pixels, 32 bit		
KEYBOARD/MOUSE	102-key keyboard and mouse		

**NOTE:** The performance specifications above are recommended for systems with fixed or PTZ cameras only. Oncom Grandeye 360 cameras are not supported with GPU rendering and use CPU rendering by default. On Windows 7 workstations, GPU rendering is only supported through the motherboard monitor outputs and any additional graphics cards should be disabled in BIOS. On Windows 8.1, Windows 10 workstations with Intel GPU and any additional graphics cards, at least one monitor should be connected to the motherboard monitor output.

\* - H.265 cameras are supported with GPU rendering only with v4.5 or newer version.

## SYSTEM DIMENSIONS



# MAXPRO® NVR XE (Xpress Edition)

8/16-Channel Entry Level Network Video Recorder (NVR)

## ORDERING

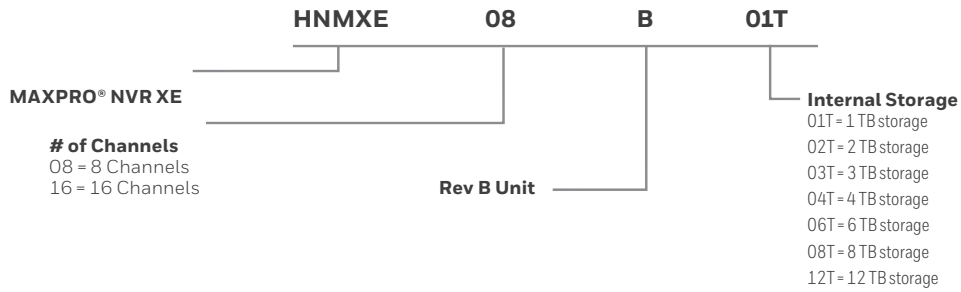
MAXPRO NVR XE		MAXPRO NVR XE	
HNMXE08B01T	MAXPRO NVR XE, Rev B, 8 Channel, 1 TB	HNMXE16B01T	MAXPRO NVR XE, Rev B, 16 Channel, 1 TB
HNMXE08B02T	MAXPRO NVR XE, Rev B, 8 Channel, 2 TB	HNMXE16B02T	MAXPRO NVR XE, Rev B, 16 Channel, 2 TB
HNMXE08B03T	MAXPRO NVR XE, Rev B, 8 Channel, 3 TB	HNMXE16B03T	MAXPRO NVR XE, Rev B, 16 Channel, 3 TB
HNMXE08B04T	MAXPRO NVR XE, Rev B, 8 Channel, 4 TB	HNMXE16B04T	MAXPRO NVR XE, Rev B, 16 Channel, 4 TB
HNMXE08B06T	MAXPRO NVR XE, Rev B, 8 Channel, 6 TB	HNMXE16B06T	MAXPRO NVR XE, Rev B, 16 Channel, 6 TB
HNMXE08B08T	MAXPRO NVR XE, Rev B, 8 Channel, 8 TB	HNMXE16B08T	MAXPRO NVR XE, Rev B, 16 Channel, 8 TB
HNMXE08B12T	MAXPRO NVR XE, Rev B, 8 Channel, 12 TB	HNMXE16B12T	MAXPRO NVR XE, Rev B, 16 Channel, 12 TB

### MAXPRO NVR XE – CHANNEL UPGRADE LICENSE

HNM01UP	MAXPRO NVR -1 Channel License Upgrade. Applicable for MAXPRO NVR XE, Rev B, 8 Channel (HNMXE08B*** units only to add support up to 16 Channels.
---------	---

Refer to the storage calculator on [www.honeywellvideo.com](http://www.honeywellvideo.com) to help determine what size unit to order.

### MAXPRO NVR XE – PART NUMBER LOOKUP



#### For more information

[www.honeywell.com/security](http://www.honeywell.com/security)

#### Honeywell Security and Fire

2700 Blankenbaker Pkwy, Suite 150  
 Louisville, KY 40299  
 1.800.323.4576  
[www.honeywell.com](http://www.honeywell.com)

ONVIF and the ONVIF logo are trademarks of ONVIF Inc. Honeywell reserves the right, without notification, to make changes in product design or specifications.

L/MPNXEB47D/D | 2/18  
 © 2017 Honeywell International Inc.

