



INSPIRE LAUNCH GUIDE – JANUARY 2023

FIRE SAFETY THAT DOES MORE



OVERVIEW

- **Welcome Note**
- **Solution Overview**
 - NOTIFIER INSPIRE™ Integrated Solution
 - NOTIFIER INSPIRE™ Panel
 - NOTIFIER Self-Test Detector
 - Honeywell Connected Life Safety Services
 - Part Numbers
- **Training & Certification**
- **Digital Toolkit**
- **Future Releases**



WELCOME

For over 70 years, NOTIFIER has been recognized as a leader in the fire and life safety industry. Today we are the largest global manufacturer of engineered fire alarm systems with over 400 distributors worldwide and regional support on every continent helping to ensure we provide the flexibility and options to meet any business needs. Our commitment to innovative, quality products and your partnerships in local communities is what propels NOTIFIER to stand proudly above the rest.

This launch guide was developed to introduce you to our new solution and to provide an overview of the NOTIFIER INSPIRE integrated fire safety platform, links to valuable assets, digital marketing toolkit and recommendations on how you can help us bring them to the market in a cohesive and integrated way.

We remain committed to our North Star of Zero Loss in our communities due to a fire event and look forward to changing the future of fire and life safety with you!

SOLUTION OVERVIEW

In today's fast-paced, on-demand world individuals and businesses are under pressure to do more with available resources. It's easy for the fire and life safety industry to feel overwhelmed and disconnected with the current disruptive and time-consuming manual processes.

NOTIFIER INSPIRE's new integrated product platform is a game-changing, all-in-one, end-to-end, connected fire and life safety solution that provides you with the technology you need to seamlessly and efficiently protect your people, property, and assets.

MEET THE PLATFORM

We are thrilled to take the fire and life safety industry to the next level with the launch of **NOTIFIER INSPIRE** with **NOTIFIER Self-Test detectors**, which leverage **Honeywell Connected Life Safety Services (CLSS)**. Together the platform will minimize disruption and downtime, maximize what can be done remotely, and deliver full compliance— helping make buildings safer and more protected.



**INSPIRE Fire
Alarm Control
Panel**



**Self-Test Smoke
Detectors**



**Connected Life
Safety Services
(CLSS)**

INSPIRE PANEL

SUMMARY

NOTIFIER INSPIRE N16 series fire alarm control panel is an all-in-one fire solution that delivers reliable protection, scalability, efficient monitoring, and timely reporting. The panel helps enhance fire technicians' efficiency by scaling based on a building's needs while minimizing equipment changes and providing secure connectivity.

OFFERING VALUE

This scalable single panel solution is now easier to install, simpler to use, and can notably enhance technician efficiency.

KEY FEATURES

- **Modular expandability through licensing, that grows with a building**
- **Modern & intuitive touchscreen display helps minimize human error**
- **New annunciators are more versatile & fully programmable for actions and/or LED indication within the same device**
- **Less equipment means less maintenance & inventory management**

[N16E DATA SHEETS](#) [N16X DATA SHEETS](#) [MORE INFO](#)

Go to Resources tab & Log in for manuals

NOTIFIER SELF-TEST

SUMMARY

NOTIFIER Self-Test automates detector testing, revolutionizing the way fire and life safety systems are installed, tested and maintained. The first UL-approved self-testing detectors are designed to ultimately help create a safer building environment and faster, more accurate, and less invasive testing process to support regulation compliance.

OFFERING VALUE

A single technician can initiate a test from the app for the entire building, minimizing disturbances and eliminating the need to access difficult to reach areas in a fraction of the time.

KEY FEATURES

- **NFPA-72 compliant, automated photo & thermal sensor testing**
- **Anti-masking technology using real smoke**
- **Bluetooth beaconing helps identify the self-test detector closest to the technician**
- **Full building testing from the app ensures 100% inspection**
- **Minimizing building occupant disruption & eliminates the need to access difficult to reach areas**

[DATA SHEET](#)

[MORE INFO](#)

Go to Resources tab & Log in for manuals

CONNECTED LIFE SAFETY SERVICES (CLSS)

SUMMARY

The NOTIFIER INSPIRE panel and NOTIFIER self-test detectors are connected to a secure cloud through Honeywell's Connected Life Safety Services (CLSS) platform. CLSS delivers real-time visibility of the fire system to installers, service technicians, and facility managers - currently serving over 49K+ sites.

OFFERING VALUE

Enables efficient commissioning, maintenance, self-test detector access, and instantaneous reporting to keep buildings connected, compliant and protected.

KEY FEATURES

- Diagnose & troubleshoot problems remotely
- Faster test & inspect, & commissioning times
- Inspection reports delivered electronically within minutes
- Improve first-time fix rates
- Ability to disable auto pass

[MORE INFO](#)

NEW PART NUMBERS

NOTIFIER INSPIRE and Self-Test are available in the US market via NOTIFIER by Honeywell. Please contact your Regional Sales Manager to learn more.

INSPIRE PART NUMBERS



Category	SKUs
Panels	N16e N16e-r (Red)
CPUs	CPU-N16LD (with Display) CPU-N16LND (No Display) CPU-16-RTO (CAB-4 Chassis)
Annunciators & Displays	NCD RLD ACM-30
Auxiliary Power Supply	PMB-AUX PMB-AUX-RTO (CAB-4 Chassis)
Loop Card	SLM-318
Back Boxes	SBB-A5 SBB-B5 SBB-C5 SBB-D5 SBB-E5
Chassis	CHS-ADP (CAB-5 Adaptor for mounting CAB-4 series chassis or equipment) C5A-M (Audio chassis to mount DVC, includes mic & well) C5A-NW(Audio Chassis to mount DVC, no well)

INSPIRE PART NUMBERS



Category	SKUs
Doors	DR-A5 DR-B5 DR-C5 DR-D5 DR-E5
Dress Panels	DP-T2A (Display & 2 ACM-30s) DP-T2A-CB4 (Same as above for CAB-4) DP-4A (4 ACM-30s) DP-4A-CB4 (Same as above for CAB-4) ABP-1 (ACM-30 Blank Plate) DP-BLN (Blank Panel) BP-5 (Battery Panel) DPA-C5 (Audio Panel, used with C5A-M) DPA-2A5 (Audio Panel w/o Well, used with C5A-NW)
Blank Doors	DR-A5B DR-B5B DR-C5B DR-D5B DR-E5B
Red Cladding Kits	DTR-A5 DTR-B5 DTR-C5 DTR-D5 DTR-E5

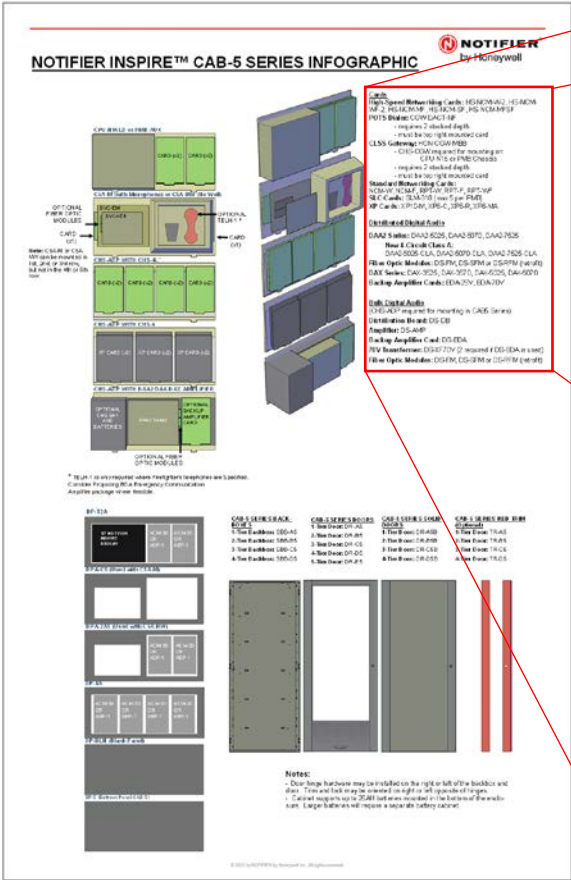
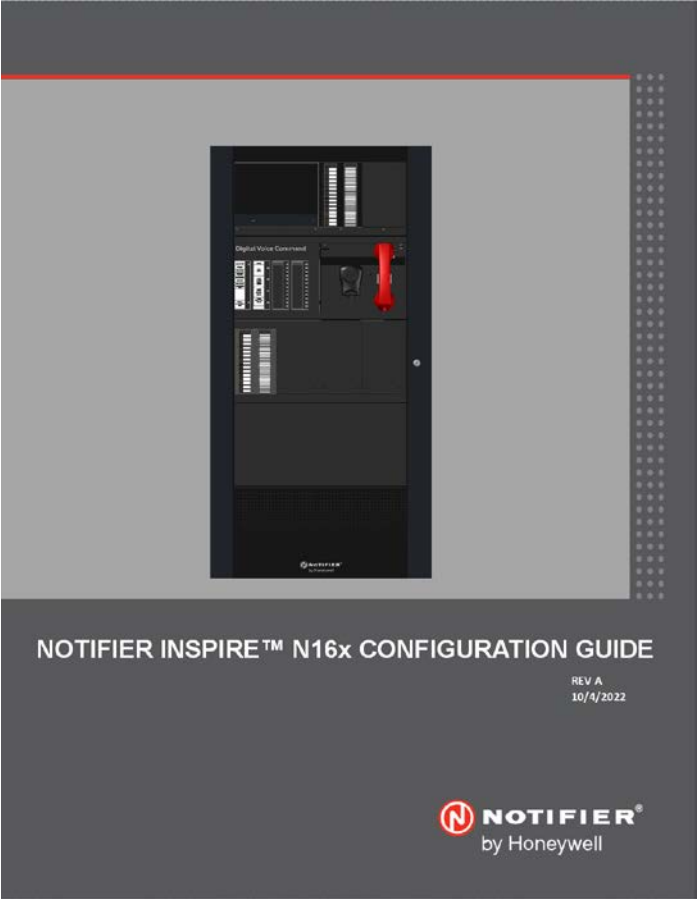
INSPIRE PART NUMBERS



Category	SKUs
Annunciator & Display Boxes	ABB-1 (Encl for 1 remote ACM-30) ABB-2 (Encl for 2 remote ACM-30) NBB-2 (Encl for NCD Display)
Self-Test Detector Photo Self-Test Photo/Thermal Self-Test Programmable Heat	FSP-951-SELFT FSP-951T-SELFT FST-951-SELFT
Licenses	N16 Panel License N16-CAC - Adds 8 Custom Action Buttons N16-CLIP - Adds CLIP SLC Protocol N16-GZN - Adds 250 General zones N16-LGZ - Adds 250 Logic zones N16-NWD - Enables Network display N16-UZC Enables Zone Coding NCD License NCD-CAC – Adds 8 Custom Action Buttons NCD-LGZ - Adds 250 Logic zones

NEW TOOLS

New configuration guide for a deep dive on individual components Single page infographics for CAB 5 components



- Cards**
- High-Speed Networking Cards:** HS-NCM-W-2, HS-NCM-WF-2, HS-NCM-MF, HS-NCM-SF, HS-NCM-MFSF,
 - POTS Dialer:** CGW-DACT-NF
 - requires 2 stacked depth
 - must be top right mounted card
 - CLSS Gateway:** HON-CGW-MBB
 - CHS-CGW required for mounting on: CPU-N16 or PMB Chassis
 - requires 2 stacked depth
 - must be top right mounted card
 - Standard Networking Cards:** NCM-W, NCM-F, RPT-W, RPT-F, RPT-WF
 - SLC Cards:** SLM-318 (max 5 per PMB)
 - XP Cards:** XP10-M, XP6-C, XP6-R, XP6-MA
- Distributed Digital Audio**
- DAA2 Series:** DAA2-5025, DAA2-5070, DAA2-7525
 - New 4-Circuit Class A:** DAA2-5025-CLA, DAA2-5070-CLA, DAA2-7525-CLA
- Fiber Optic Modules:** DS-FM, DS-SFM or DS-RFM (retrofit)
- DAX Series:** DAX-3525, DAX-3570, DAX-5025, DAX-5070
 - Backup Amplifier Cards:** BDA-25V, BDA-70V
- Bulk Digital Audio (CHS-ADP required for mounting in CAB5 Series)**
- Distribution Board:** DS-DB
 - Amplifier:** DS-AMP
 - Backup Amplifier Card:** DS-BDA
 - 70V Transformer:** DS-XF70V (2 required if DS-BDA is used)
 - Fiber Optic Modules:** DS-FM, DS-SFM or DS-RFM (retrofit)

NOTIFIER INSPIRE CAB-5 Series Infographics and Configuration Guide

ENGINEERING SPECIFICATIONS

Updated Consultant Specifications to drive better life safety outcomes throughout the life cycle of a building

SECTION 28 31 00 – FIRE DETECTION AND ALARM SYSTEM

INTELLIGENT FIRE ALARM DETECTION SYSTEM

THE A/E SHALL EDIT THE INFORMATION IN THIS DOCUMENT AND REMOVE SYSTEMS THAT DO NOT PERTAIN TO THE PROJECT WHERE INDICATED BY EDITOR NOTES. THE A/E SHALL VERIFY THAT SECTION TITLES REFERENCED IN THIS SECTION ARE CORRECT FOR THIS PROJECT'S SPECIFICATIONS; SECTION TITLES MAY HAVE CHANGED.

PART 1 - GENERAL

1.1 RELATED SECTIONS

- A. Section 13800 – Building Automation and Control.
- B. Section 13900 (21 00 00) – Fire Suppression.
- C. Section (27 15 00) – (Fire Alarm Communications Horizontal Cabling).

1.2 SUMMARY

- A. This section of the specification includes the furnishing, installation, and connection of an intelligent reporting, microprocessor controlled, addressable, fire detection and emergency alarm communication system. It shall include, but not be limited to, alarm initiating devices, alarm notification appliances, control panels, auxiliary control devices, annunciators, power supplies, and wiring as shown on the drawings and specified herein.
- B. The fire alarm shall comply with requirements of NFPA Standard 72 for Fire Alarm Control Unit except as modified and supplemented by this specification. The system shall be electrically supervised and monitor the integrity of all conductors.
- C. The system shall be an active/interrogative type system where each addressable device is repetitively scanned, causing a signal to be transmitted to the main Fire Alarm Control Unit (FACU) indicating that the device and its associated circuit wiring is functional. Loss of this signal at the main FACU shall result in a trouble indication as specified hereinafter for the particular input.

SPECIFIER TO REMOVE PARAGRAPH BELOW IF A VOICE SYSTEM IS NOT A PROJECT REQUIREMENT.

- D. The facility shall have an Emergency Voice/Alarm Communication System (EVACS). Digitally stored message sequences shall notify the building occupants that a fire or life safety condition has been reported. Message generator(s) shall be capable of automatically distributing up to eight (8) simultaneous, unique messages to appropriate audio zones within the facility based on the type and location of the initiating event. The Fire Command Center (FCC)

Intelligent Fire Alarm Detection System

[REV A 11/11/2022]

3

[N16e/x Engineering Specifications](#)

Go to the Resources tab

CLSS TOOLS SUITE

Battery Calculator

Voltage Drop Calculator

<https://buildings.honeywell.com/us/en/solutions/fire/clss/tool-suite>

INSPIRE Panel Configurator : Tool that creates the bill of quantity for INSPIRE panels - coming soon

ONYX TO INSPIRE CROSS REFERENCE

ONYX Hardware	INSPIRE Hardware	
CPU2-3030D	CPU-N16LD	
CPU2-3030DC		
CPU2-3030D-FR		
CPU2-3030D-PO		
CPU2-3030D-SP	CPU-N16LND	
CPU2-3030ND		
CPU2-640	CPU-N16LD	
CPU2-640E		
CPU-320SYS		
CPU-320SYS-C		
CPU-320-SYSE		
CPU-320SYS-FR		
KDM-R2		N/A
KDM-R2C		
KDM-R2-FR		
KDM-R2-PO		
KDM-R2-SP		
LCM-320	SLM-318	
LEM-320		
NCA-2	NCD	
NCA-2C		
NCA-2-FR		
NCA-2-PO		
NCA-2-SP		
NFS-320	N16e	
NFS-320C		
NFS-320E		
NFS-320E-PO		
NFS-320E-SP		
NFS-320R		N16e-r
NFS-320-SYS	CPU-N16LD	
UDACT-2	CGW-MB	
UDACT-2	CGW-DACT-NF	

	ONYX Annunciators	INSPIRE Annunciators
FR	ACM-24AT	ACM-30
	ACM-48A	
	ACM-8R	TM-8
	AEM-24AT	ACM-30
AEM-48A		
FR	FDU-80	RLD
	FDU-80C	
	FDU-80G	
	FDU-80GC	
FR	LCD-160	RCD (Future)
	LCD-160C	
FR	LCD-160-FR	
FR	LCD-160-PO	
FR	LCD-160-SP	
	LCD2-80	
FR	LDM-32	LDM2-32 (Future)
	LDM-E32	
FR	LDM-R32	LDM2-60 (Future)
FR	SCE-8	ACM-30
	SCE-8L	
FR	SCS-8	
FR	SCS-8L	
FR	TM-4	TM-8

CAB-4 Mechanical	INSPIRE Mechanical
ADDR-B4	DR-B5
ADDR-B4R	DR-B5 + DTR-B5
ADDR-C4	DR-C5
ADDR-C4R	DR-C5 + DTR-C5
ADDR-D4	DR-C5
ADDR-D4R	DR-D5 + DTR-D5
DR-A4	DR-A5
DR-A4B	DR-A5B
DR-A4BR	DR-A5B+DTR-A5
DR-A4R	DR-A5+DTR-A5
DR-AA4B	
DR-AA4BR	N/A
DR-AA4R	
DR-B4	DR-B5
DR-B4B	DR-B5B
DR-B4BR	DR-B5B+DTR-B5
DR-B4R	DR-B5+DTR-B5
DR-C4	DR-C5
DR-C4B	DR-C5B
DR-C4BR	DR-C5B+DTR-C5
DR-C4R	DR-C5+DTR-C5
DR-D4	DR-D5
DR-D4B	DR-D5B
DR-D4BR	DR-D5B+DTR-D5
DR-D4R	DR-D5+DTR-D5
N/A	DR-E5
N/A	DR-E5B
N/A	DTR-E5

CAB-4 Mechanical	INSPIRE Mechanical
SBB-A4	SBB-A5
SBB-A4R	
SBB-AA4	N/A
SBB-AA4R	
SBB-B4	SBB-B5
SBB-B4R	
SBB-C4	SBB-C5
SBB-C4R	
SBB-D4	SBB-D5
SBB-D4R	
N/A	SBB-E5
BMP-1	ABP-1
BP2-4	BP-5
DP-1B	DP-BLN
ADP-4B	DP-4A
n/a	DP-T2A
n/a	DP-4A-CB4
n/a	DP-T2A-CB4
DPA-1A4	DPA-2A5
DPA-1	DPA-C5
DPA-2B	
CA-1	C5A-M
CA-2	
N/A	C5A-NW
N/A	CHS-ADP
N/A	CPU-16-RTO

	CAB-4 Mechanical	INSPIRE Mechanical
	ABF-1B	ABB-1
	ABF-1DB	ABB-1
	ABM-1	ABB-1
	ABS-1B	ABB-1
	ABS-1TB	ABB-1
FR	ABF-1BC	ANN-1C
FR	ABF-1DBC	ANN-1C
FR	ABS-1TBC	ANN-1C
FR	ABS-1BC	ANN-1C
	ABF-2B	ABB-2
	ABF-2DB	NBB-2
	ABS-2B	ABB-2
	ABS-2D	NBB-2
FR	ABS-2DC	ABB-2C
FR	ABF-2DBC	NBB-2C

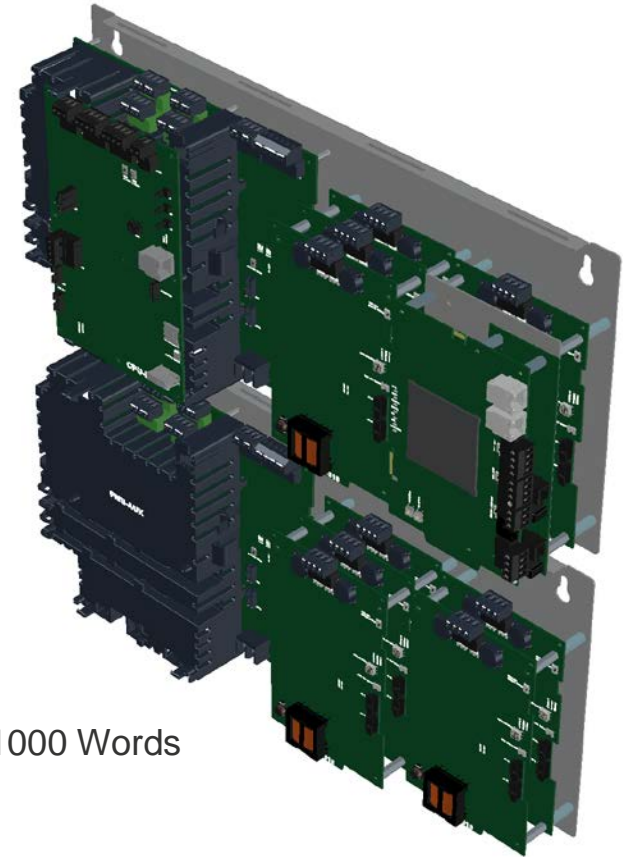
NOTE:
FR = Future Release
Cross Reference table not all encompassing



VIRTUAL 3D MODEL

What is a scale virtual 3D model worth?

- **3D CAD libraries NOW available for all NOTIFIER INSPIRE Series panel components**
 - CAB-5 Series backboxes and doors (select trim by layer)
 - CAB-5 chassis library
 - Retrofit chassis and dress panel
 - CAB-5 dress panel library
 - ACM-30 and ABP-1
 - SLM-318
 - Remote Cabinets
 - CLSS Gateway Library
- **Also available:**
 - NCM-W
 - NCM-F
 - DVC-EM
 - DVC-DKB
 - DS-FM
 - CHS-6
 - CHS-4L
 - DAA2 Series
 - EQ Cabinets and Doors*



An Image is Worth 1000 Words

Go to [Download Center](#) -> Login -> Search for “3D Library”

<input type="checkbox"/> File	Type	Size	Updated Date/Modified Date
<input type="checkbox"/> DVC Series 3D Library (Click to Download)	Drawings	20.80 MB	11/16/2022
<input type="checkbox"/> N16e 3D Library (Click to Download)	Drawings	51.80 MB	11/14/2022
<input type="checkbox"/> N16x 3D Library (Click to Download)	Drawings	315.33 MB	11/16/2022

TRAINING

We have INSPIRE training courses available on [MyHBU](#)

TRAINING

For existing NOTIFIER Certified technicians

	VILT (Virtual Instructor lead Training)	On-Demand
Status	Available now	Available now
Name of the course	“Notifier Inspire N16 Certification Course”	“NOTIFIER INSPIRE N16 Fire controls On-Demand training”
Where	MyHBU search for “INSPIRE”	MyHBU search for “INSPIRE”
Duration	1 day	Approx 4 hours
Certification	Yes	Yes
Frequency	Up to 3 times a week	On Demand
Class size	5-20	Individual
Price	\$745	\$645
Pre- requisite	Existing NOTIFIER certified technicians	Existing NOTIFIER certified technicians

TRAINING

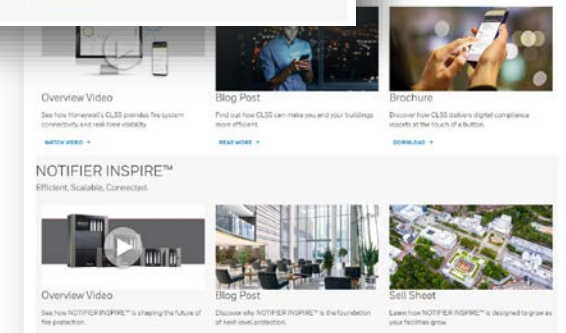
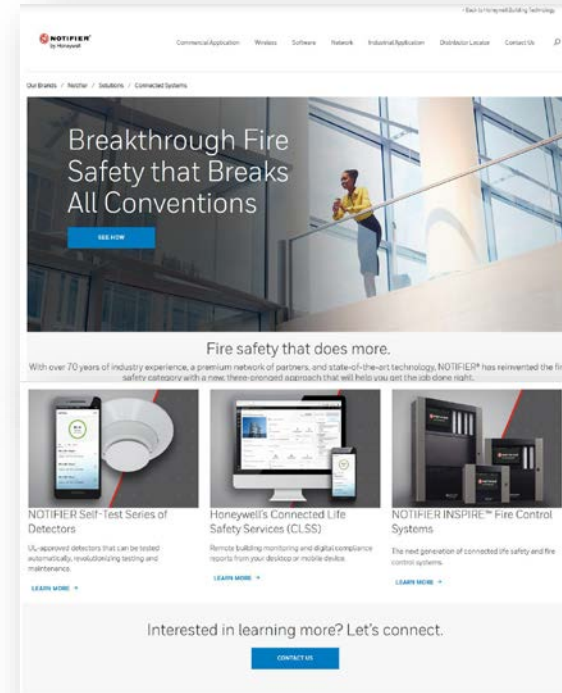
- For New technicians – Complete the **NOTIFIER University** before going for the **INSPIRE VILT/On demand training**
- Train the trainer for INSPIRE – Available NOW
 - Available to Platinum ESDs only
 - Must attend Honeywell Certified Trainer class(3 days)
 - Complete INSPIRE training (VILT or On-demand training)
 - Panels in your facility
 - The audit for First class would be scheduled ahead
- FUTURE : INSPIRE will be incorporated into the **NOTIFIER University curriculum** – 4 day Program- (Great for New Technicians) \$2000 for virtual class – starting July 2023
- FUTURE: On-demand Self test focused training focused on enabling T&I technicians (Free of charge) - to be launched in Q1 2023
- We will be hosting a series of training webinars in February so you can get more familiar with the system

DIGITAL TOOLKIT

NOTIFIER has developed a digital marketing toolkit of assets our partners can use to promote and create demand for NOTIFIER INSPIRE. An overview of those tools is in the slide that follows.

DIGITAL TOOLKIT ASSETS

- **Flyers:** Inspire Series Panel, Self-Test Detector
- **Brochure:** INSPIRE Brochure(Panel, Detector, CLSS)
- **Videos:** Inspire Series Panel, Self-Test Detector, CLSS combined
- **Blog Posts:** Inspire Series Panel, Self-Test Detector, CLSS combined
- **Social Graphics:** Inspire Series Panel, Self-Test Detector, CLSS combined, with templated options to co-brand.
- **Web graphics:** Carousel Image / Banner ads
- **Sales Pitch Presentations:** Inspire Series Panel, Self-Test Detector, CLSS combined
- **Product Photography**
- **Project Testimonial Case Studies**



[Visit Our ESD Digital Marketing Toolkit](#)

FUTURE FEATURES

This is just the beginning; we have numerous features planned in the near future.

FUTURE FEATURE DEVELOPMENT

This is just the beginning; we have numerous features planned in the future, some highlights are:

- Agent & Water Releasing listing
- Lamp Driver Modules
- Seismic Listing
- Smoke Control Listing UUKL
- Mass Notification UL 2572 Listing

Contact your RSM if you have any of the above applications

[Sales and Contact Info \(US\) | NOTIFIER by Honeywell](#)



THANK YOU

Please contact your [Notifier Regional Sales Manager](#) to learn more.